

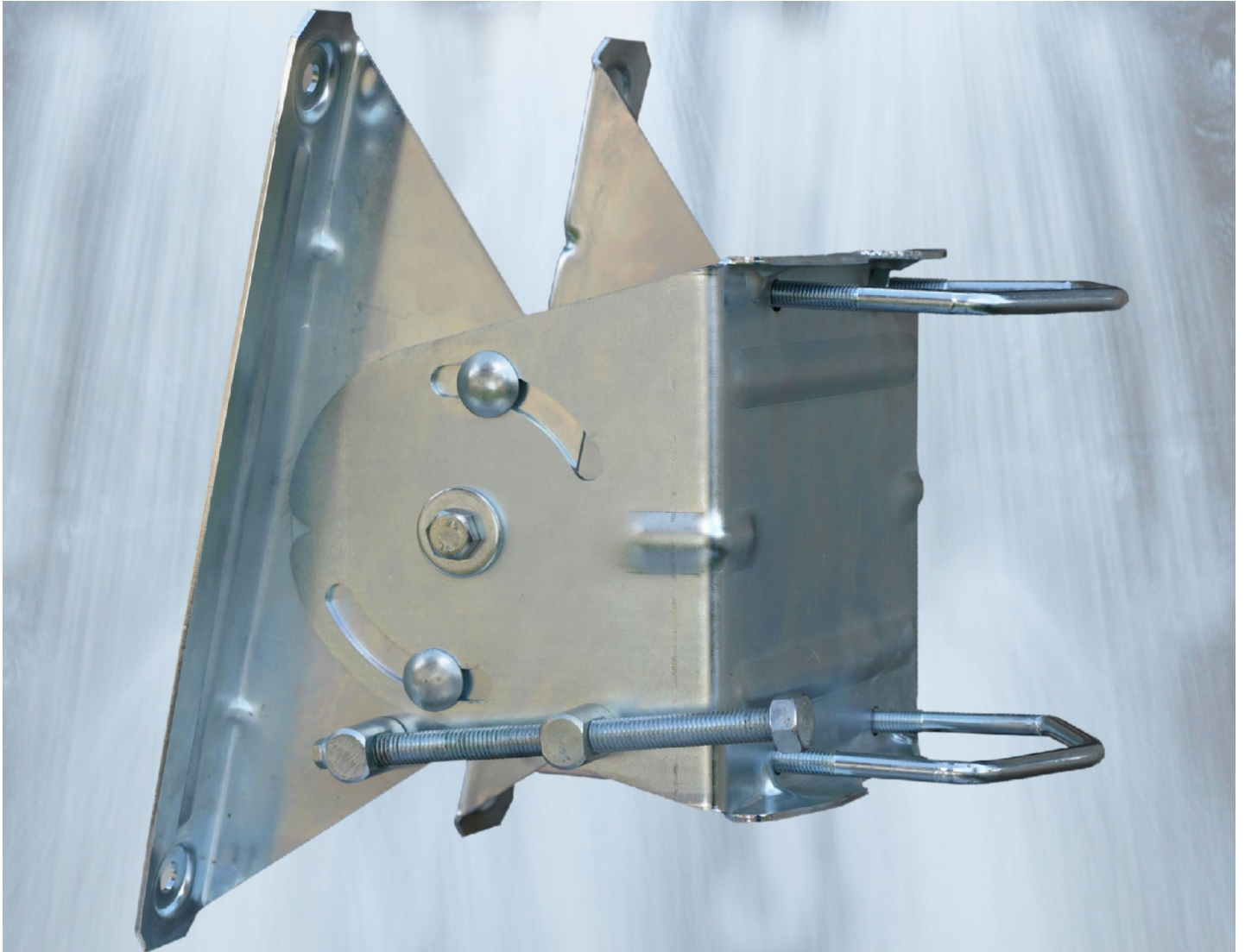
# TW-1500 and TW-1500 G Offset Dish



Parameter	Unit	Numerical	Reflector Material:
Effective Reflector Size	mm	1515x1610	Glass Epoxy Metallised Composite (resistant to salt, air pollution)
Operating Frequency	GHz	10.7÷12.8	
Gain (for frequency in GHz)	10,7 dB	42,7	<b>Colour:</b> light grey (RAL 7047)
	11,3 dB	43,2	
	12,6 dB	44,1	
3dB Beamwidth (for frequency in GHz)	10,7 deg	1,3	<b>Package Size (outside dimensions):</b> 1÷2 units in Cardboard Box 1680x180x1595 mm
	11,3 deg	1,2	
	12,6 deg	1,1	
Focal Length	mm	1100	<b>Compatible Accessories:</b> ASZ-1500 Elevation over Azimuth Mount
Offset Angle	deg	20,1	
Feed Clamp Diameter	mm	40,0	<b>Wind Loading:</b>
Weight Reflector TW-1500/TW-1500 G	kg	13,0/16,0	
Weight TW-1500/TW-1500 G include Mount:	Az-El kg	18.5/21,5	Operational 80 km/h Survival 200km/h
Power/Voltage electric anti-icing system (for TW-1500 G only)	W V	320,0 AC 230	
			<b>Operating Temperature:</b>
			Operational -40 ÷ 60 Survival -50 ÷ 80

# ASZ-1500

## Elevation over Azimuth Mount



Parametr	Unit	Numerical	Material:
Mount Size	mm	300 x 355 x 260	Hot-dip galvanized steel and stainless steel
Elevation Adjustment Range	deg	-60 ÷ +2 lub -2 ÷ +60	
Elevation Fine Adjustment Range	deg	-60 ÷ +2 lub -2 ÷ +60	Package Size: Two cardboard boxes: 360x120x 60 mm 215x210x195 mm
Azimuth Adjustment Range	deg	0 ÷ 360	
Azimuth Fine Adjustment Range	deg	brak	Compatible Accessories: TW-1500 Offset Dish TW-1500 G Offset Dish TW-1800 Post Mount
Mast Pipe Interface	mm	60 ÷ 88	
Weight	kg	5,5	